

**LAKESIDE CEMETERY  
CONCRETE  
REQUEST FOR QUOTATIONS**

**PROJECT DESCRIPTION**

**Location:** Lakeside Cemetery is located south of Morden along the west side of highway 432 with a legal description of Lot 6, Plan 47135 within NE 36-2-6W of the RM of Stanley and a civic address of 11102 PR 432.

**Scope of work:** Excavation of topsoil (spoiled on site), base work, concrete runners (2-ft wide and 4-inch minimum thickness), reinforced concrete pads, concrete pads and concrete curbing. Concrete runners to be saw cut every 5ft.

Runner, pad and curb location layout and staking to be completed by the city. Finish landscaping of topsoil done by others. The gravel pathway shown in the design is to be completed by others.

Concrete Reference page 60. <https://morden.ca/planning-engineering-services>. MIT No. 860(I) Concrete Curbing.

Detailed Plan attached.

**COMPLETION DATE**

August 1, 2025

**FORM OF SUBMISSION**

Submissions are welcomed at the City of Morden's main office by mail or delivered in person as follows below. Address any questions to Shawn Dias at [sdias@mymorden.ca](mailto:sdias@mymorden.ca) or 204-362-3999.

- Mailing Address:  
City of Morden Civic Center  
100-195 Stephen Street  
Morden, MB, R6M 1V3

**NEGOTIATED CONTRACT**

Please fill in and submit the attached form by **3pm on May 2nd, 2025**.

The City may, at its discretion, enter into contract with one, multiple, or none of the parties who submit a quotation. The City is not under obligation to any party on the basis of their submission.

The City will use the proposed unit prices and proposed schedule to evaluate the bids.

Item Description		Qty.	Unit	Unit Price (\$)	Total Price (\$)
1.	Concrete Runner 50ft	3	EACH	\$	\$
2.	Concrete Runner 60ft	1	EACH	\$	\$
3.	Concrete Runner 70ft	3	EACH	\$	\$
4.	Concrete Pad Reinforced (384sq ft)	2	Sq ft	\$	\$
5.	Concrete Curb (54 ft)	54	Ft	\$	\$
6.	Concrete Pad (60 sq ft)	2	Sq Ft	\$	\$
<b>SUBTOTAL</b>				\$	\$
<b>GST (5%)</b>				\$	\$
<b>TOTAL</b>				\$	\$

NOTE: Prices shall include all common excavation, supply and installation and compaction of base works. Spoil site for excavated material is located on site in the north east corner (add to existing pile).

PROPOSED START DATE: \_\_\_\_\_

PROPOSED COMPLETION DATE: \_\_\_\_\_

Bidder Name \_\_\_\_\_

Contact Info \_\_\_\_\_

Bidder Signature \_\_\_\_\_



# Lakeside Cemetery Location Map







**City of Morden**  
Planning and Engineering

100-195 Stephen St. Tel: (204) 822-4434  
Morden, MB Fax: (204) 822-6494  
R6M 1V3

CEMETERY.  
MUSLIM BURIAL SECTION

PLAN. DETAILS

Date: MARCH 2025

Drawing Scale

AS SHOWN

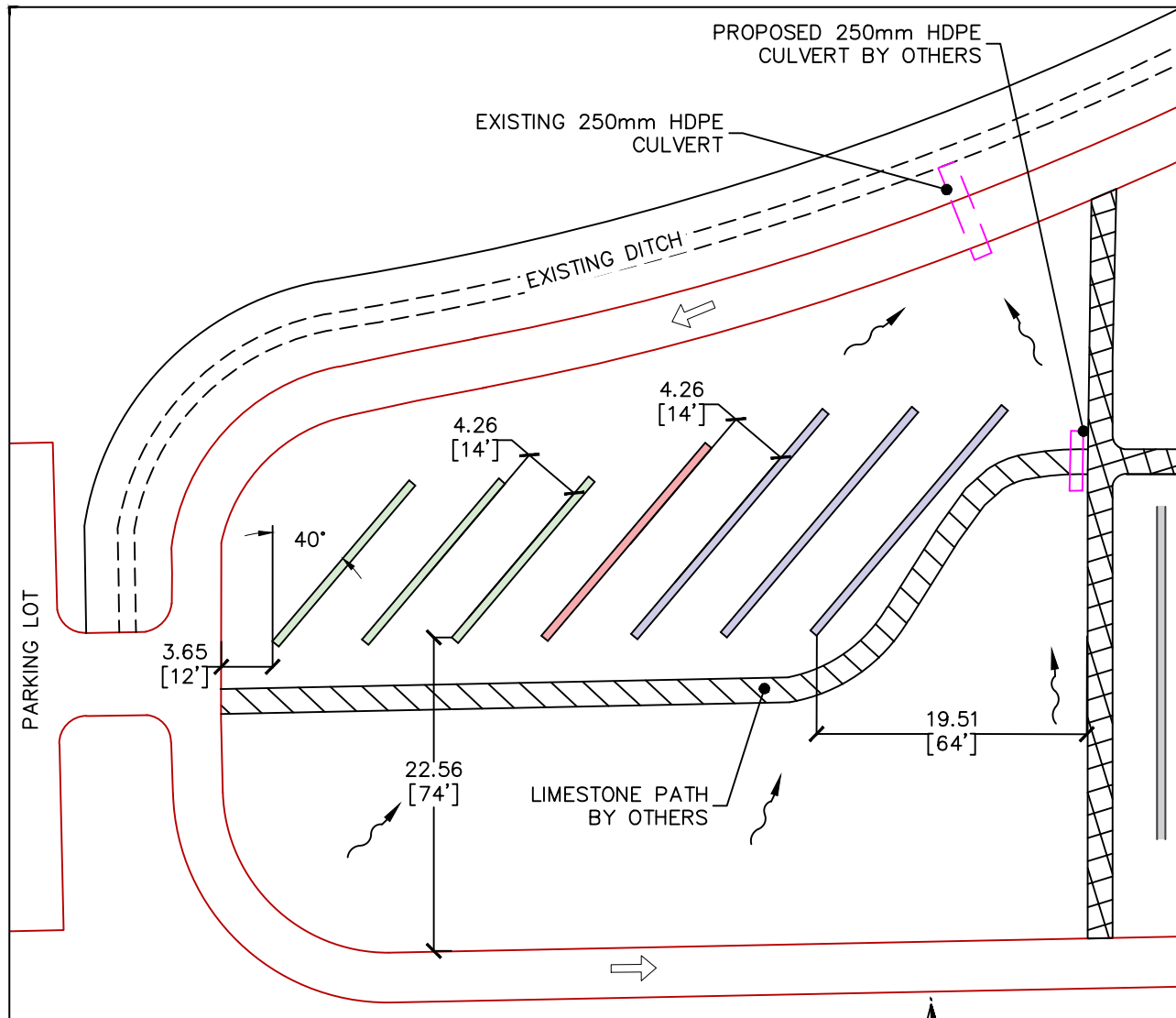
Project Code

Sheet Reference

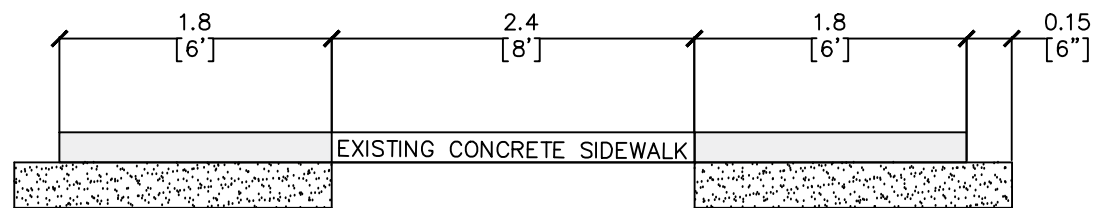
X-01

R-A

Z:\1. City Projects\Projects\2025\Sidewalks\Cemetery\Sidewalks.dwg

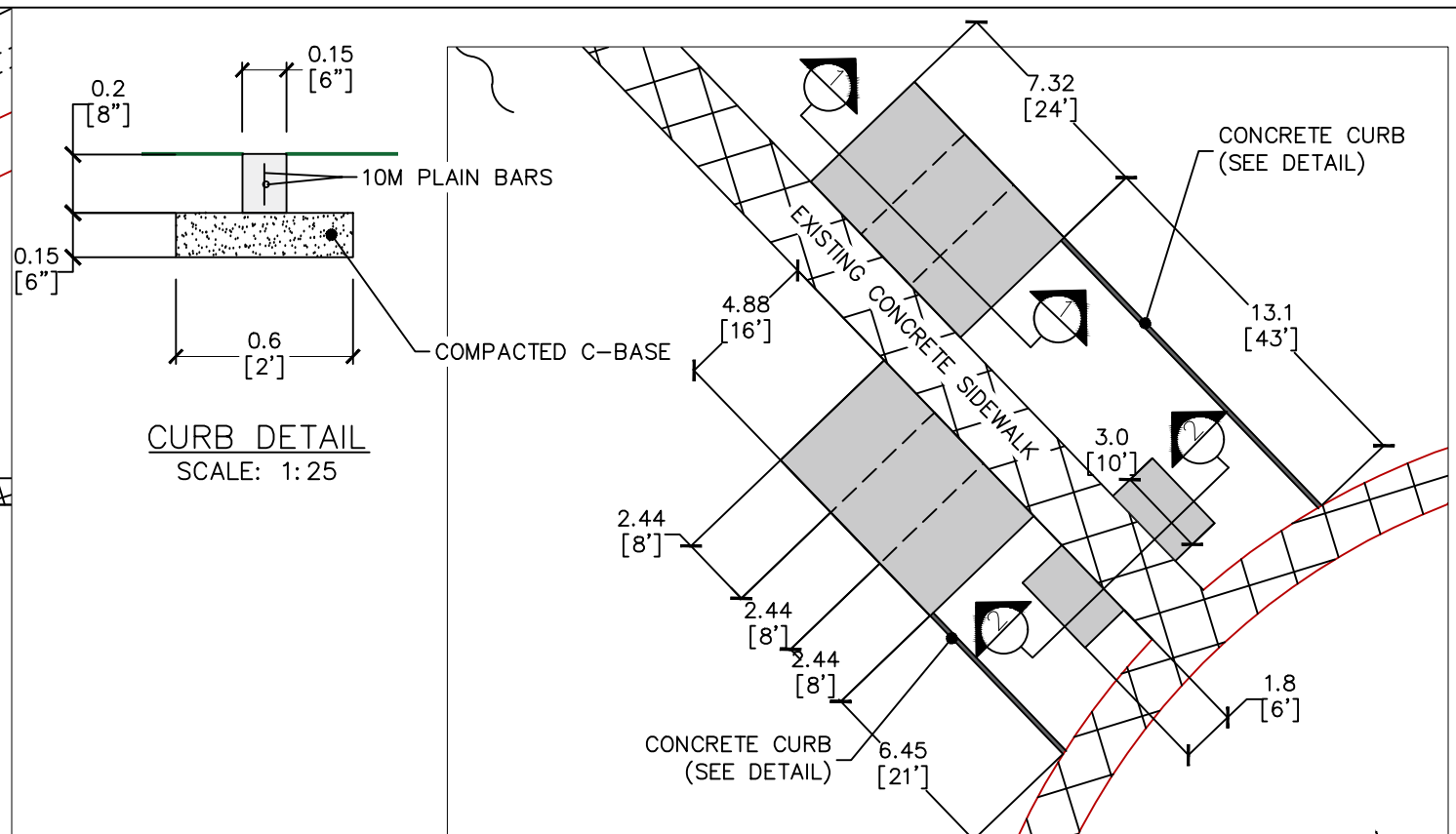


DETAIL A. CONCRETE RUNNERS PLAN  
SCALE: 1:500

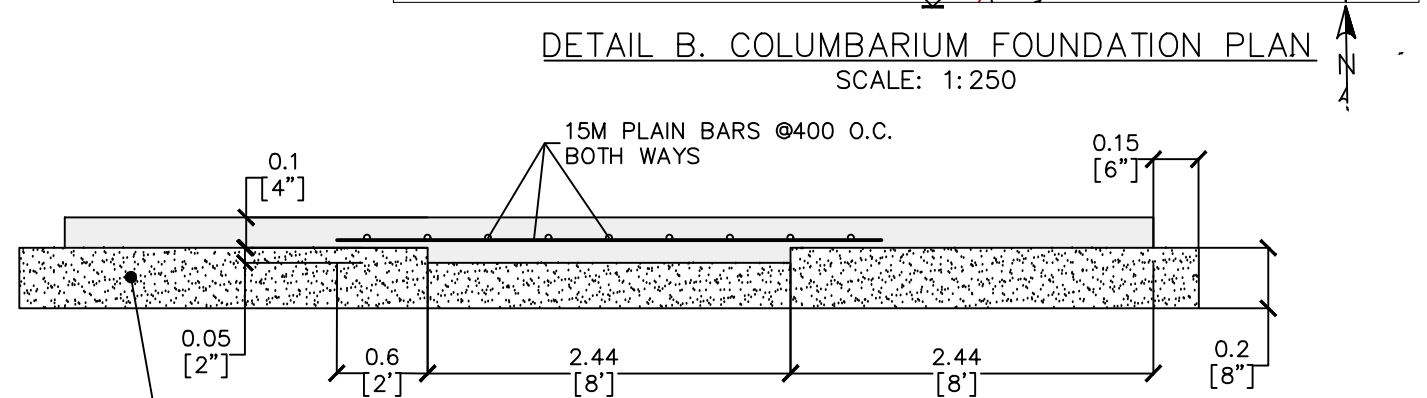


2 CROSS SECTION  
SCALE: NTS

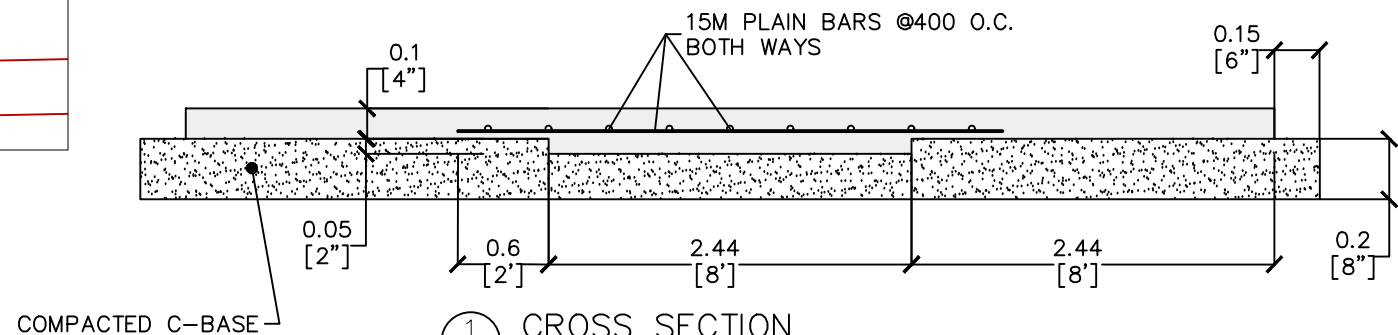
EXISTING	LEGEND-PLAN	PROPOSED
	ROAD EDGE	
	DIRECTION OF SURFACE DRAINAGE	
	DIRECTION OF TRAFFIC	
	LIMESTONE PATH	
	FUTURE LIMESTONE PATH	
	CONCRETE RUNNER	
	70FT CONCRETE RUNNER	
	60FT CONCRETE RUNNER	
	50FT CONCRETE RUNNER	



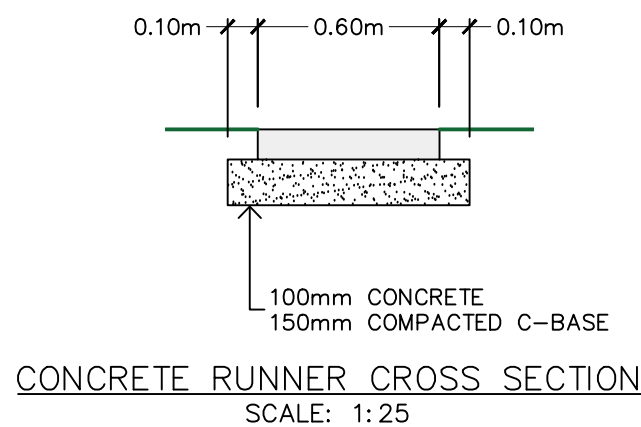
CURB DETAIL  
SCALE: 1:25



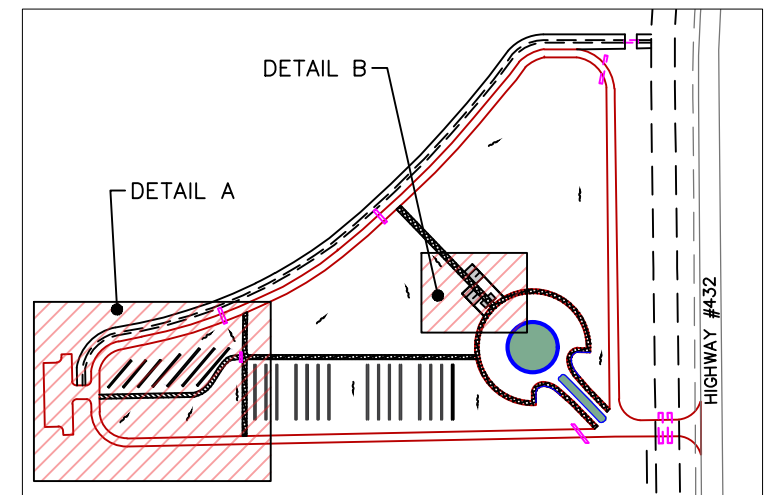
DETAIL B. COLUMBARIUM FOUNDATION PLAN  
SCALE: 1:250



1 CROSS SECTION  
SCALE: NTS



CONCRETE RUNNER CROSS SECTION  
SCALE: 1:25



KEY PLAN  
SCALE: NTS